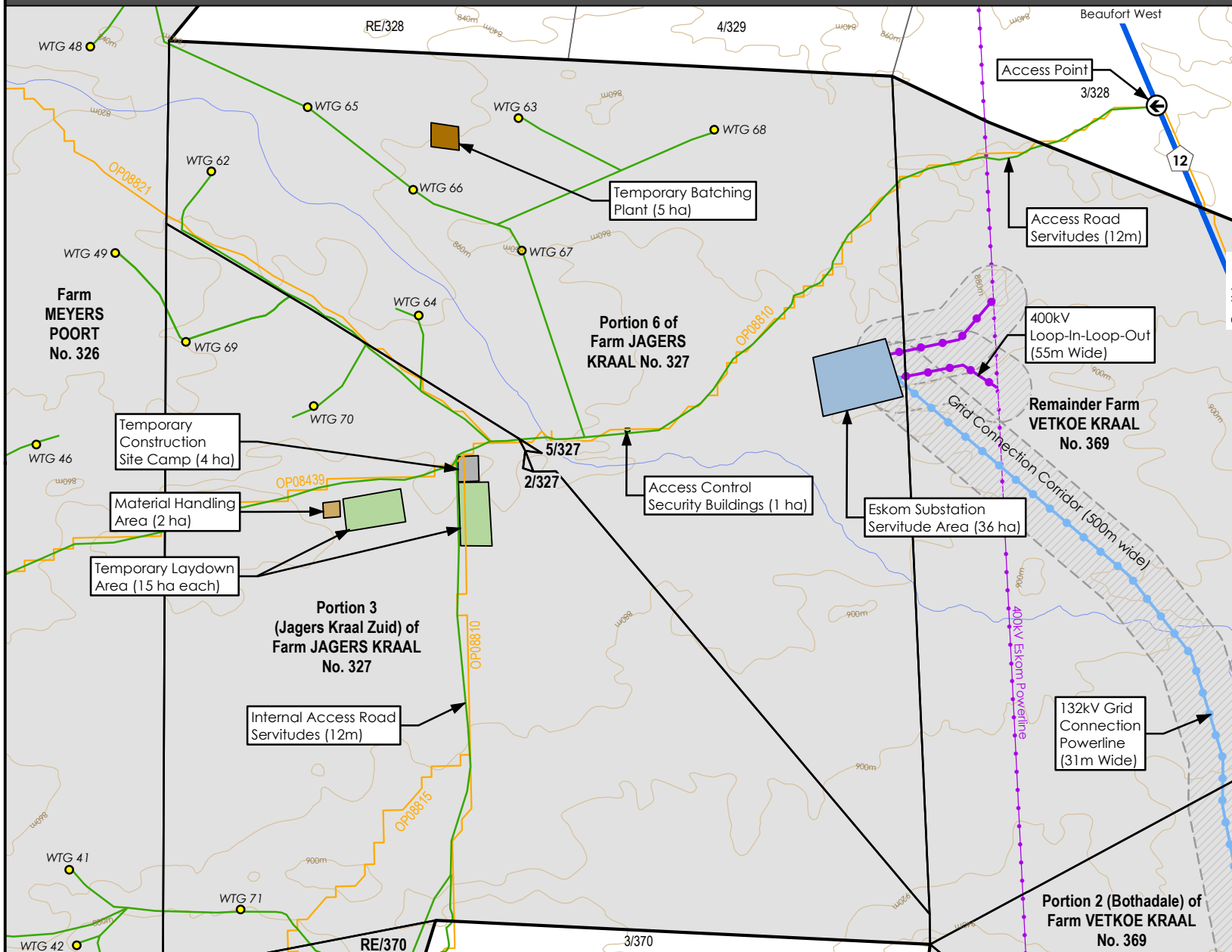


CARISSA WIND ENERGY FACILITY

3.1

SITE PLAN : INSET 1

MAP No.



BEAUFORT WEST LOCAL MUNICIPALITY BY-LAW ON MUNICIPAL LAND USE PLANNING FOR BEAUFORT WEST LM (2019)

Consent Use (Section 15(2)(o))

- Wind Turbine Footprints (154)

Substation Complex (East) : 25 ha footprint including:

- On-site Substations, including Eskom Switching Station (9 ha)
- Battery Energy Storage Systems (5 ha)
- Operation & Maintenance Areas (1 ha)

Substation Complex (West) : 25 ha footprint including:

- On-site Substations, including Eskom Switching Station (9 ha)
- Battery Energy Storage Systems (5 ha)
- Operation & Maintenance Areas (1 ha)

- Material Handling Areas (4 x 2 ha)
- Temporary Batching Plants (8 x 5 ha)
- Temporary Laydown Areas (4 Sites, Total 67 ha)
- Temporary Construction Site Camps (2 x 4 ha)
- Access Control Security Buildings (3 x 1 ha)

Access Road, Powerline Servitudes and Substation Areas (Exempt ITO Section 24(1)(f))

- Eskom Substation Servitude Area (1 x 36 ha)
- Eskom Switching Station Servitude Areas (within 9 ha footprint x 2)
- 132kV Grid Connection Powerline Options (31m Wide)
- 400kV Loop-In-Loop-Out (55m Wide)
- Access and Internal Road Servitudes (12m)

Other

- National Road
- Minor Roads
- Eskom Powerline
- 20m Contours
- Drainage Line

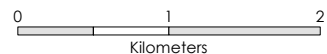
General Note: Positions, alignment and areas on the SDP are approximate and subject to final survey.

Date:

2025-01

Map Reference:

1896E-IN1



Urban Dynamics makes no warranty of any kind, expressed or implied, with regard to the data and shall not be held liable in any event for any incidental or consequential damages in connection with or arising out of the use of this data. The data remains the sole property of the client and may only be used for the purposes of a project with the prior written approval of the client.

COPYRIGHT
RESERVED



URBAN DYNAMICS
TOWN & REGIONAL PLANNERS
Tel: 041 374 3980 Email: info@udec.co.za